

YOU'RE INVITED . . .
 to the CT ACHMM
 WASTE TO ENERGY PLANT
 TOUR AT
 WHEELABRATOR &
 DINNER AT THE NEW
 MGM GRAND FOXWOODS

HIGHLIGHTS of the EVENING

- ◆ **GUEST SPEAKERS:**
 Tour Guides from Wheelabrator will explain the operation of the Eastern Connecticut Resource Recovery facility including feed system, combustion process, pollution control equipment, power generation, metal recovery
- ◆ **Update on ACHMM Activities/Board Mtg**
 Gene Metti, President
 New On line EHMM course
 National Conference Speakers
- ◆ **DINNER:** \$15.00 for members (See Menu attached)
 \$25.00 for non-members
 (Dinner is partially subsidized by the Chapter, Bar Drinks not included)
- ◆ **Enjoy the new MGM Grand's Shops, Refreshments, Night Clubs, Casino**

WHEN: Friday, 18 July 08
TIME: 3:30 PM Presentation & Tour
 Wheelabrator RR plant
 5:30 PM Dinner, Junior's
 Restaurant, MGM Grand,
 Under the Stars, Weather
 Permitting
 7:30 PM Board Business

*Plant Located off I-395 at Exit 83 in
 Lisbon, CT (see map attached)
 (860) 367 1817*

**START EARNING YOUR
 ANNUAL CMP'S NOW!**
 This Chapter meeting
 contains technical
 presentations and will be
 recognized for credit.

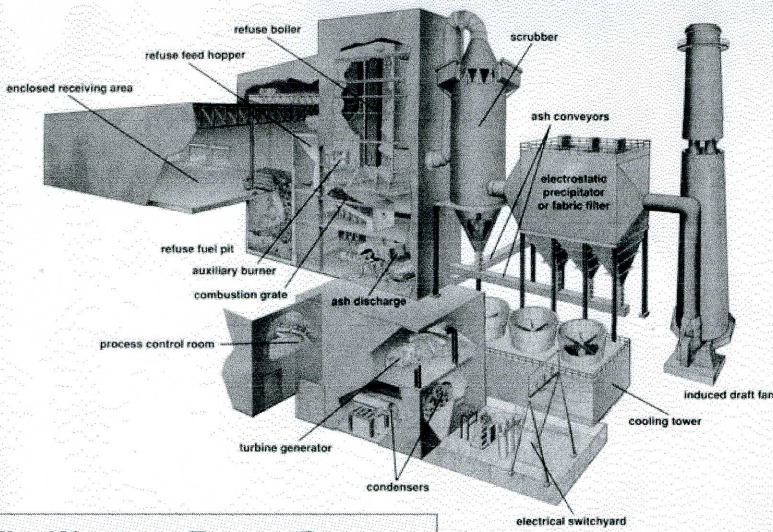
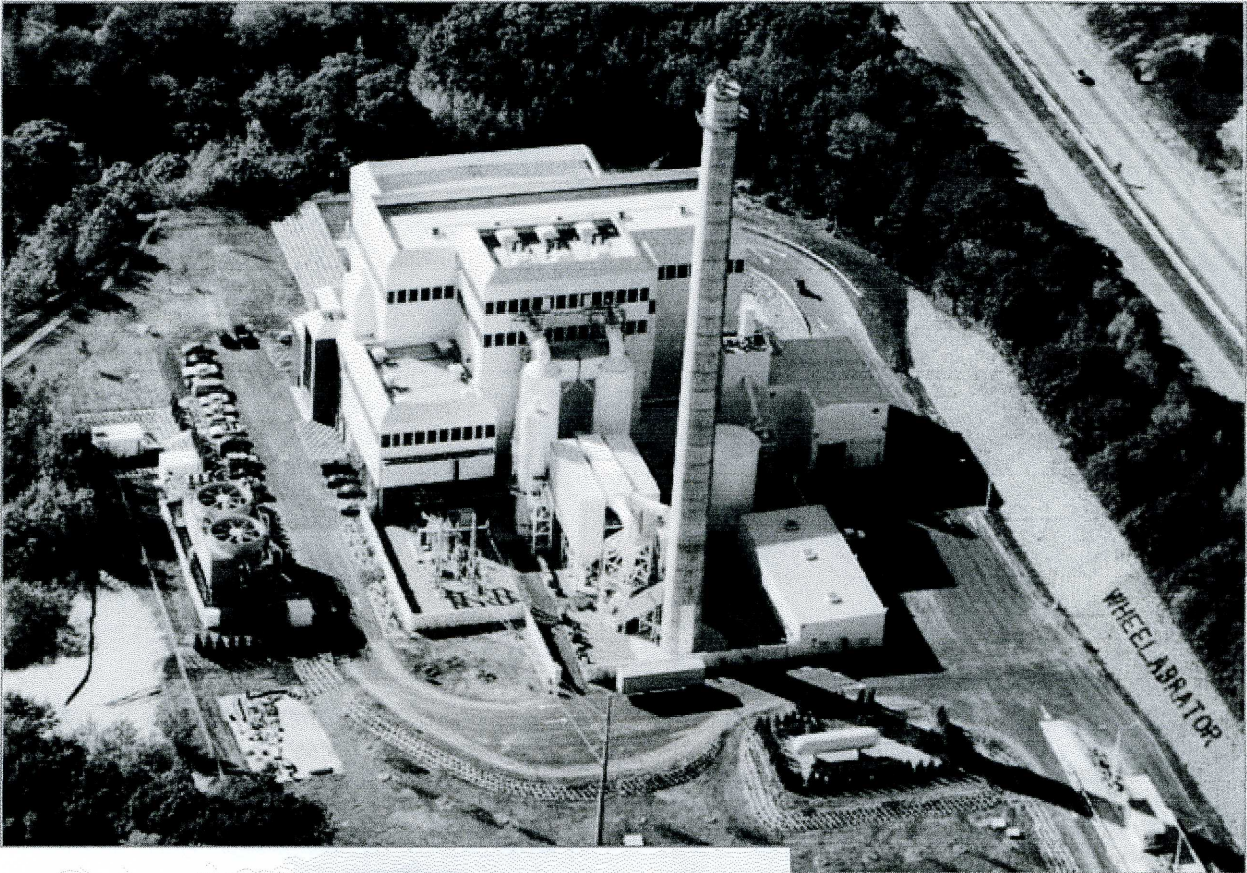
**Seating and tour is limited to the 1st 25 persons.
 Forward your RSVP to contactus@ctachmm.org
 ASAP!!!!**

**Remember to leave enough travel time on Friday July
 18. Traffic to the Foxwoods area via I-95 /91 on
 Friday afternoons in July can be challenging.**



Wheelabrator Lisbon Inc.

A Waste Management Company



The Waste-to-Energy Process

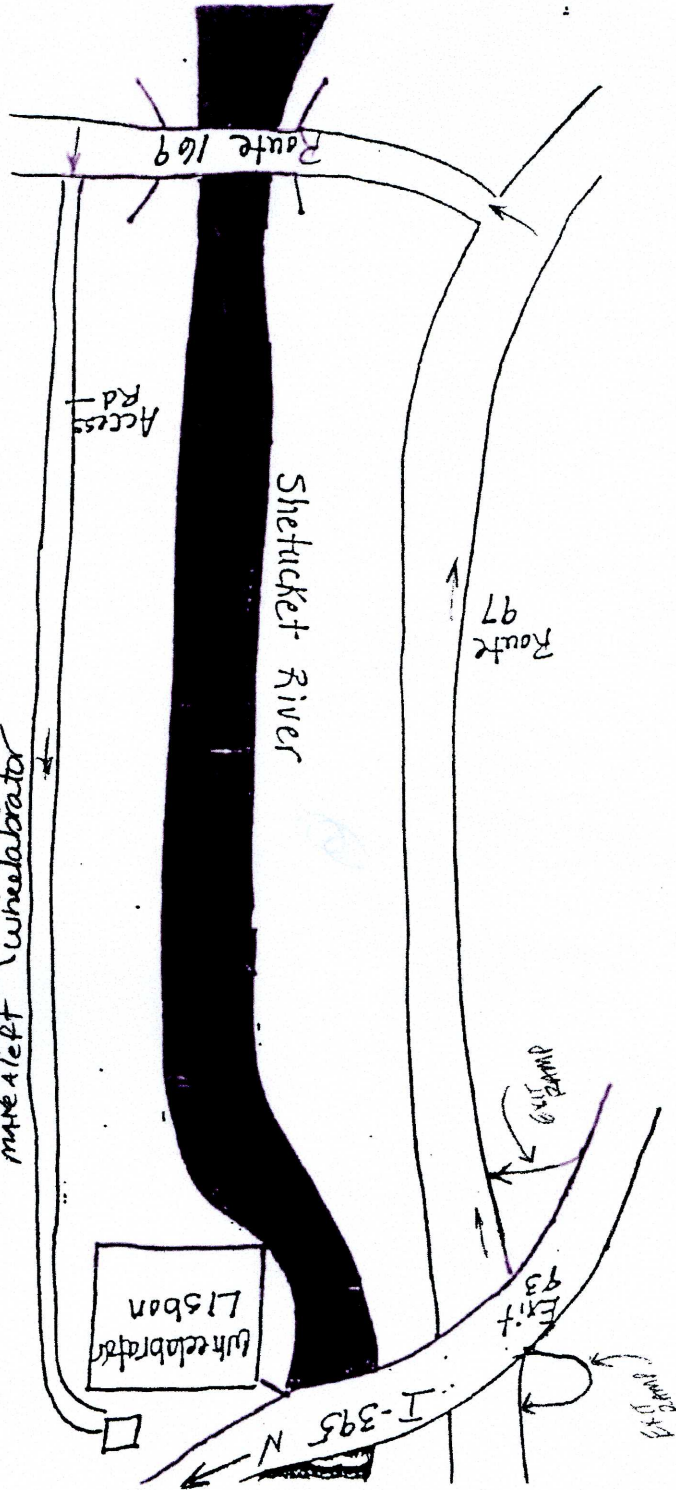


Refuse Crane Pulpit



**DIRECTIONS TO WHEELABRATOR LISBON, 425 SOUTH BURNHAM HIGHWAY
LISBON, CT 06351**

From I-395 North or South, take Exit 83. Turn right at the end of the ramp on to Route 97. Take Route 97 for 1 1/2 miles. Turn left on to Route 169. Go over the bridge and take the first left after the bridge on to the access road to the plant. There is a sign in front for ~~Riley Energy Systems~~. Follow the access road to the scalehouse and stop there for parking directions. ~~Go to Administration~~
make a left Wheelabrator



MAPQUEST.

*DIRECTIONS
W HELIABRATOR PLANT
TO MGM FOXWOODS*



A: 425 S Burnham Hwy, Lisbon, CT 06351-3141

- START

1: Start out going WEST on S BURNHAM HWY/CT-169 toward NORWICH AVE/CT-97. Continue to follow CT-169.

0.3 mi

2: Turn LEFT onto NORWICH AVE/CT-97. Continue to follow NORWICH AVE.

1.1 mi

3: NORWICH AVE becomes BOSWELL AVE/CT-12.

0.5 mi

4: Turn SLIGHT LEFT onto N MAIN ST/CT-12.

1.8 mi

5: Turn LEFT onto CT-2.

0.7 mi

6: Turn LEFT onto STONINGTON RD/CT-2. Continue to follow CT-2.

6.8 mi

END

7: End at 39 Norwich Westerly Rd Ledyard, CT 06339-1128

Estimated Time: 20 minutes Estimated Distance: 11.24 miles

B: 39 Norwich Westerly Rd, Ledyard, CT 06339-1128

Total Time: 20 minutes Total Distance: 11.24 miles